

Emissions. In your hands.

# Tekomar XPERT marine Emissions Module



The Emissions module is a part of Accelleron's Tekomar XPERT marine all-in-one digital solution for the marine industry.

It is aimed at helping shipowners and operators by providing transparency on current CO<sub>2</sub> emissions and forecasting of CII rating. Together with automated reporting, this allows shipowners and operators to improve CII ratings and operational efficiency.

Get a complete picture of emissions across your fleet.

# In a nutshell:

The Emissions module has three main functions that simplify and reduce the effort for management of emissions compliance on vessels.



### Monitoring:

Monitors CO<sub>2</sub> emissions and CII rating for each voyage and accumulated year-to-date.



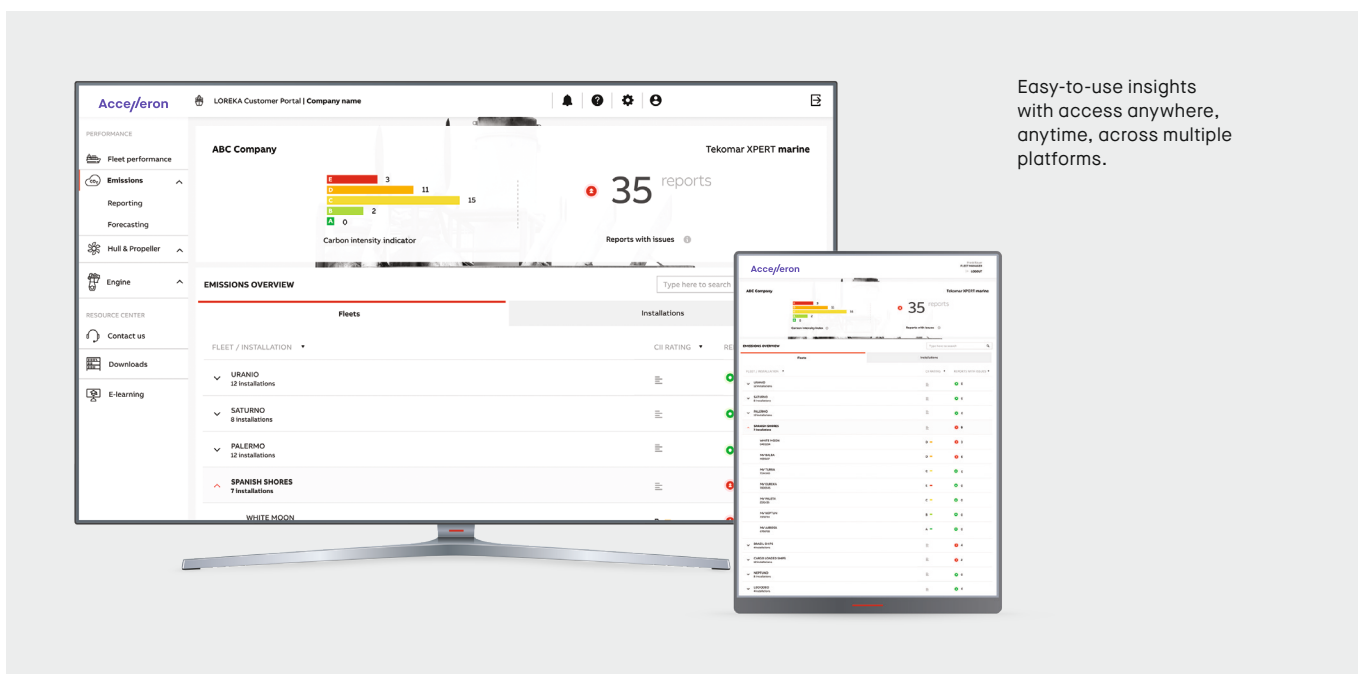
### Forecasting:

Allows Interactive forecasting of CII rating based on changes to key parameters.



### Reporting:

Automatically generates IMO-DCS and EU-MRV reports including pre-validation.



Easy-to-use insights with access anywhere, anytime, across multiple platforms.

### Additional features of the Emissions Module:

- No additional crew efforts. Automated voyage and port stay detection.
- Capability to connect to Accelleron partners for additional data (e.g. weather, AIS positioning).
- Validated consumption, CO<sub>2</sub> and CII values for all fuels, including year-end bunkering report.
- Emissions reports are pre-validated and data points with issues are automatically flagged.
- Consolidated view in web application and file downloads on demand.