

Insights. In your hands.

Tekomar XPERT marine



With sustainability in mind, we want to empower you with data insights, which is why we created Tekomar XPERT marine.

Accelleron's all-in-one digital solution for the marine industry helps you to manage both environmental compliance and propulsion efficiency in one simple-to-use solution. This allows you to make informed decisions that help you to reduce your carbon footprint.

Get a complete picture of engine performance, emissions and hull and propeller health across your fleet.

In a nutshell:

The Tekomar XPERT marine suite gives you quick access to the fleet health data that you need most via three clear dashboard elements:



Emissions module:

Calculates and forecasts the vessels Carbon Intensity Indicator (CII) rating and provides automated emissions reports.



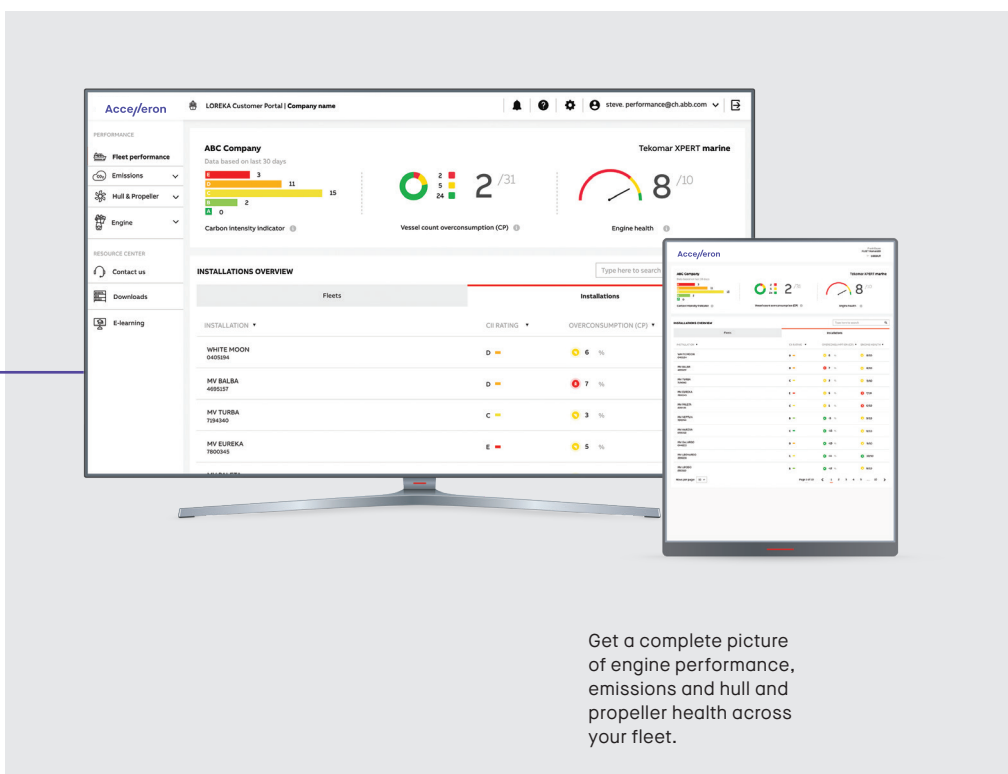
Engine Module:

Provides advisory on engine optimization that enables fuel efficiency and engine health supervision.



Hull & Propeller Module:

Assesses condition of hull and propeller and provides advisory on necessity as well as optimal timing for hull cleaning.



Get a complete picture of engine performance, emissions and hull and propeller health across your fleet.

Highlights and features

Highlights of Tekomar XPERT marine:

- Monitor and benchmark relevant performance KPIs on company, fleet and vessel level.
- Save fuel and reduce emissions by identifying overconsumption and optimizing engine performance.
- Display year-to-date CII rating and simulate future CII rating based on impact of key performance factors.
- Fulfill IMO-DCS and EU-MRV regulatory requirements efficiently with automated and pre-validated emissions reports.
- Prevent charterclaims by ensuring consumption and hull resistance are according to charter reference.

Key features:

- Available as a subscription with no upfront investment required.
- Can be installed as a full software suite or as individual modules as per customers needs.
- Comes fully preconfigured, delivers results immediately.
- Can work with existing data collection sources, no additional hardware required.
- 24/7 access to insights via the customer portal.
- Modern, easy-to-use visual interface.
- Better use of data with corrections for external factors applied thus making evaluations independant of current conditions.