

Operate smarter with Turbo SmartCare

# Turbo SmartCare



Operators obtaining full overview via the Turbo SmartCare customer portal

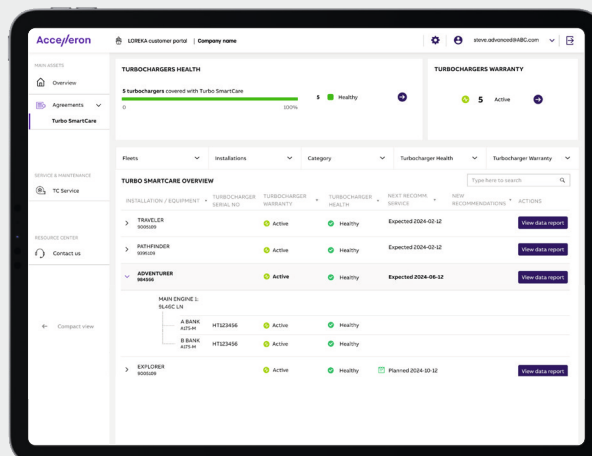
Turbo SmartCare is a data enabled service agreement optimized for your specific medium-speed, four-stroke engine turbocharger.

With intelligent remote insights and optimized maintenance based on data, Turbo SmartCare guarantees to deliver peace of mind and optimal operational flexibility while enhancing your OPEX.

# Application



For all Accelleron turbocharger type A100-M axial, TPL-A and TPL-C



# Features



**Fixed Running Hours (RHS) price**



**Full scope turbocharger services (spare parts and labor)**



**Turbocharger health insights**

# Benefits



## Financial predictability

Encompassing a fixed running hours price covering all of the below, you gain financial foresight to accurately plan ahead:

- Fixed running hours price (including overhauls, spare parts, wear & tear, scheduled & unscheduled services)
- Unexpected events covered when turbocharger is the root cause
- Spare units provided by Accelleron (if required)



## Optimized maintenance through data

Utilizing the power of data and the knowledge of our technical experts, you gain in the following ways:

- Flexible and customized maintenance scheme based on operational data
- Time between overhaul (TBO) optimization with aim of alignment between turbocharger and engine TBO
- Enhanced OPEX
- Turbocharger health and operational analysis including recommendations for safe & reliable operations



## Peace of mind

With Turbo SmartCare you gain peace of mind in operating your turbocharger through:

- Continuous warranty throughout duration of contract
- 24/7 access to customer portal to view your turbocharger status and health
- Enhanced engine uptime