

Acce/eron

LOREKA360° Tekomar XPERT Engine

Fuel Efficiency.
Data Driven.
Expert Led.

ABC Company

Data based on last 30 days



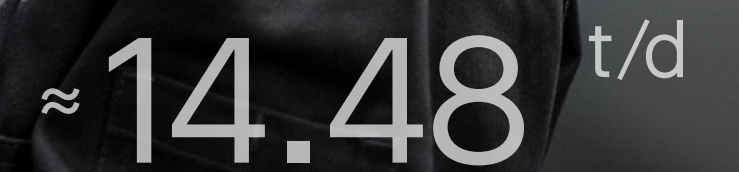
Engine health



Optimization potential



Fuel saving potential



CO₂ Saving potential

Tekomar XPERT Engine

About

As commercial demand in global shipping continues to increase, while decarbonization regulations tighten further, the marine industry needs solutions that combine operational efficiency with sustainable performance.

The key is to maximize vessel profitability and voyage predictability with solutions that provide actionable insights to cut unnecessary fuel consumption, reduce emissions, and improve operational efficiencies, securing long-term profitability while meeting sustainability targets.

Tekomar XPERT Engine—Accelleron's digital solution—helps you get the best performance from your engines, no matter their type, make, or age, increasing lifespan, and lowering operating costs.

Part of the **LOREKA360° package**, **Tekomar XPERT Engine** uses raw performance data from your engine sensors and transforms it into meaningful insights, giving ship operators and fleet managers a powerful tool to increase performance and improve reliability across your entire fleet.

With **proven results from over 12,000 engines on 3,000 vessels**, and trusted by over **130 marine customers** worldwide, **Tekomar XPERT Engine** isn't just remote monitoring—it's predictable long-term advisory you can rely on.



Why Tekomar XPERT Engine?



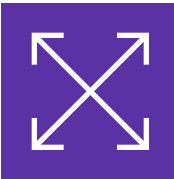
Instant engine diagnostics
Access engine performance data and use it to avoid unexpected downtime.



Actionable optimization guidance
Receive expert, data-backed advice on how to adjust engines for maximum fuel savings and minimum CO₂ output.



Complete fleet visibility
Benchmark and monitor performance across vessels, engine types, or entire fleets—at sea or on shore.



Platform flexibility
Access from desktop or tablet, with a simple and intuitive user interface.



No hardware required
Uses existing shipboard systems and sensors—no need for installations, retrofits, or added infrastructure.

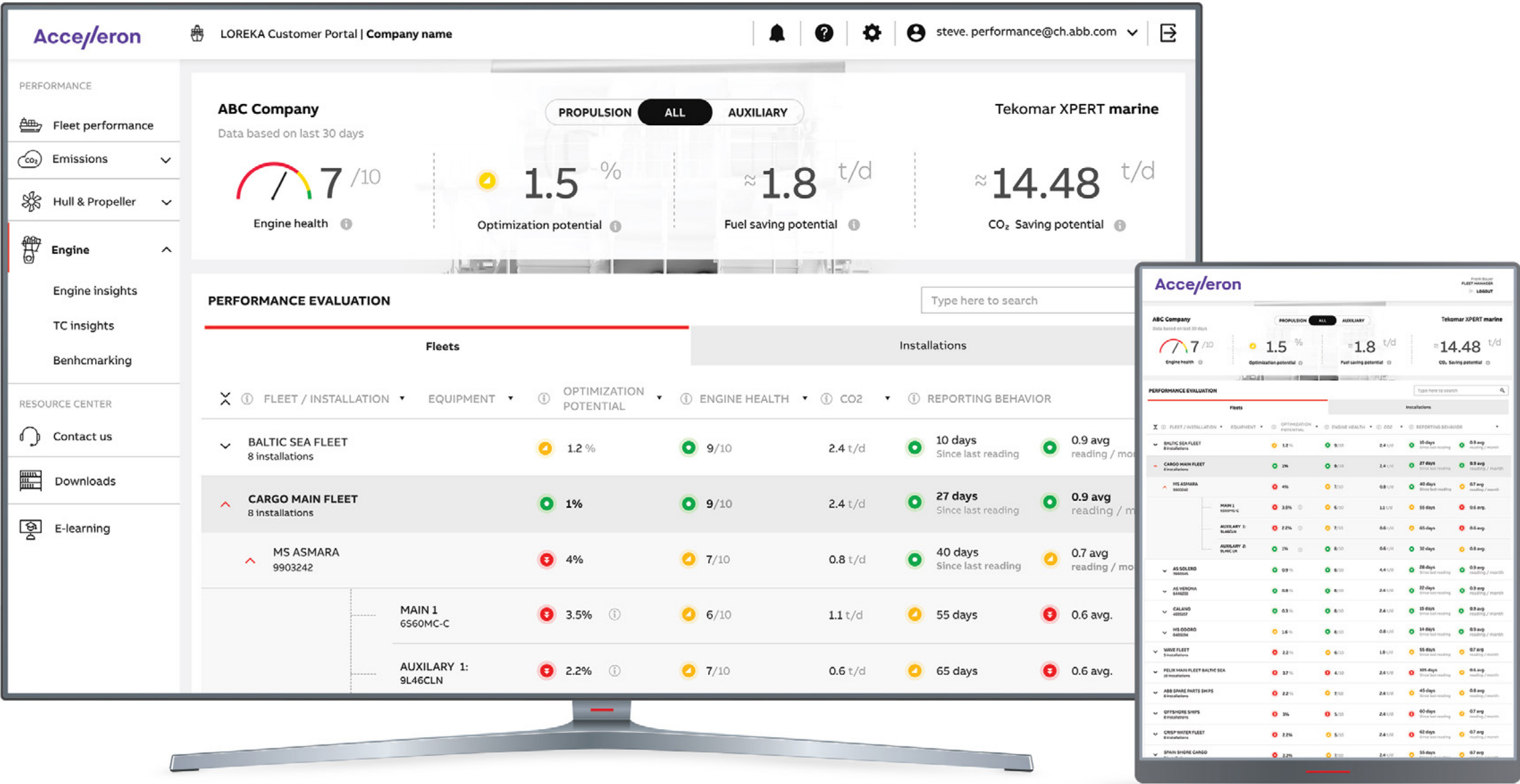
Powerful features for smarter operations

- **Fleet-wide benchmarking**
Compare vessel and fleet performance with clear KPI dashboards and performance baselines.
- **Thermodynamic engine models**
Evaluate engine against original testbed performance under service conditions by applying ISO corrections.
- **KPI filtering & trend analysis**
Focus on what matters—filter by savings potential, emissions, condition indicators, and more.
- **Visual performance alerts**
Color-coded indicators quickly highlight engines that are underperforming or in need of attention.
- **Cloud-to-cloud integration (optional)**
Seamless data ingestion from third-party platforms eliminates the need for manual input.

Proven impact on performance & sustainability

- Up to **3% reduction in fuel consumption per engine**
- Significant **CO₂ and greenhouse gas emission reductions**
- Enhanced **condition monitoring to improve engine longevity**
- Early issue detection to prevent costly **unplanned downtime**

Whether you’re looking to comply with IMO regulations, improve your CII score, or reduce operating costs, Tekomar XPERT Engine can provide you with immediate recommendations that will help you to improve the performance of your fleet.





Trusted by the industry

3000+

Installed on **3,000+ vessels** worldwide

12,000+

In operation on **12,000+ engines**

130+

Used by **130+ operators** worldwide

Not only monitoring – a strategic asset

Tekomar XPERT Engine isn’t just a dashboard—it’s a performance partner. It simplifies decision making, helping to reduce short- and long-term costs, offering a reliable window onto CII performance, and providing better operational visibility.

- **Proactive operational decisions** with actionable insights
- **Long-term strategic planning** through historical trends and KPIs
- **Commercial transparency** for charter parties and operators

All without adding a single sensor or requiring a retrofit.

As a global leader in marine propulsion and turbocharging, Accelleron brings over a century of engineering innovation to every vessel. Tekomar XPERT Engine is a product of this legacy—designed to deliver high performance with low complexity.

- Available via **subscription-based model**
- Scales from individual vessels to entire fleets
- Full support from **Accelleron’s global service network**



Learn more at accelleron.com/tekomar-xpert-engine

© 2025 Accelleron Switzerland Ltd.
All rights reserved. Specifications subject to change without notice.

